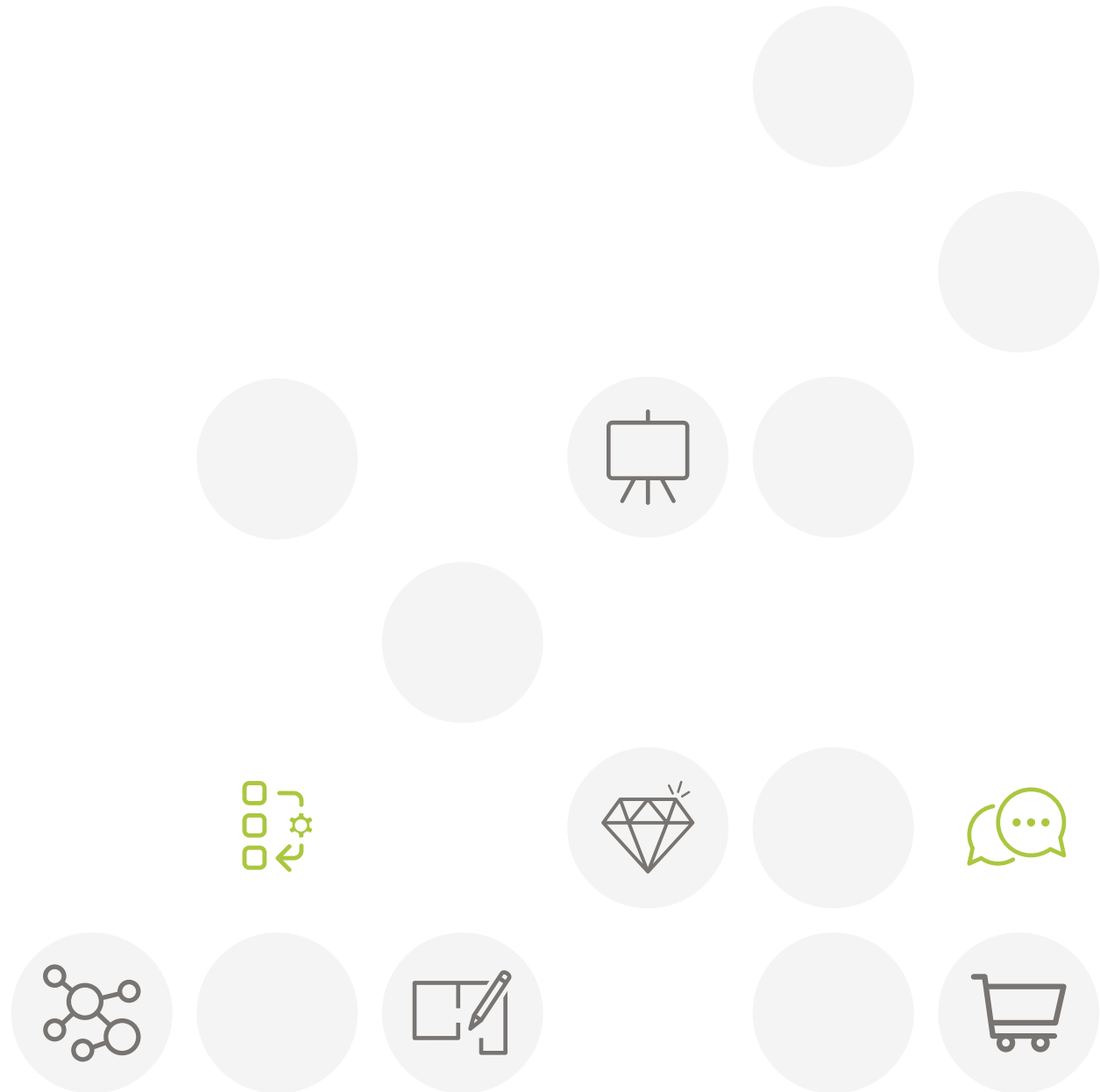




pCon

New organization registration

Quick guide





Intro



Registration



Download
DataClient



Install
DataClient



Wait for data
confirmation



Download data



Invite
colleagues

- You'll be part of the **pCon community** at the end of this process
- Using offline configurable data will dramatically increase your **work efficiency and quality**





Intro



Registration



Download
DataClient



Install
DataClient



Wait for data
confirmation



Download data



Invite
colleagues

If you have problems or questions about
this process please contact

support-se@easterngraphics.com

+39.051.587.5509



Intro



Registration



Download
DataClient



Install
DataClient



Wait for data
confirmation



Download data



Invite
colleagues

- Go to the link
<https://login.pcon-solutions.com/catalog/TFT6TY>
- Click **Let's go!**

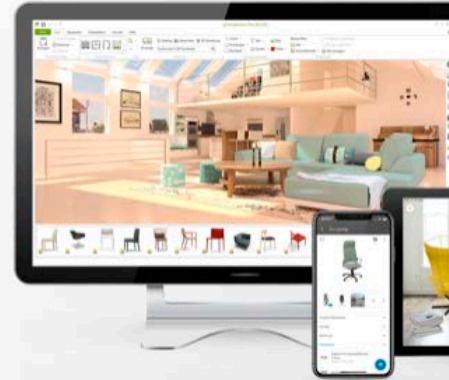
Welcome to pCon!

pCon offers 3D product configuration, room planning, comprehensive product information and offer creation - on mobile devices as well as desktop computers.



Log in now - or register in only a few steps.

Let's go!





Intro



Registration



Download
DataClient



Install
DataClient



Wait for data
confirmation



Download data



Invite
colleagues

- If you already have an account, enter your credentials
- If you do not have an account, create one by clicking on **Register**

Welcome to pCon.login ?

User name or e-mail*

Password

Forgot your password? [Log in](#)

[Register](#)

pCon
UPDATE * Login also possible with pCon.update login data

By logging in, I agree to the [Terms of Use](#) and [Privacy Policy](#).



Intro



Registration



Download
DataClient



Install
DataClient



Wait for data
confirmation



Download data



Invite
colleagues

- All fields are mandatory
- **Avoid registering with a generic email address** such as gmail or hotmail - it will speed up the approval process
- Enter the name and address of your organization. If you're a **independent professional** in the 'Company' field enter your professional title followed by your first and last names
- Click **Register**



- One registration per company
- Remember your Username and Password



Intro



Registration



Download
DataClient



Install
DataClient



Wait for data
confirmation



Download data



Invite
colleagues

- You'll receive an email with a **link to confirm your email address - Click on it**
 - If you don't receive it after some minutes control the spam folder

- You'll be redirected to the pCon.login portal
- Click on **Continue**



Dear Mr. Grilli,

Thank you for your registration on pCon.update.

To continue with your registration, please confirm your e-mail address.

Confirm e-mail address

This confirmation process is necessary to make sure that the e-mail you entered is correct. If you have not activated this service, please ignore this e-mail.



Welcome to pCon.login!

Your e-mail address has been confirmed. You can now use your pCon.login.

Continue



Intro



Registration



Download
DataClient



Install
DataClient



Wait for data
confirmation



Download data



Invite
colleagues

- Once the registration is confirmed, you can request data
- Click on **Request**
- Generally the requests are approved within 24 hours



pCon.login

Request Access to Catalog



Hereby you request the activation of the catalog directly from the manufacturer. You will receive a notification e-mail as soon as the manufacturer has decided on your request.

Skip

Request





Intro



Registration



Download
DataClient



Install
DataClient



Wait for data
confirmation



Download data



Invite
colleagues

- In the side menu click on **Applications**
- Click **Select** in **pCon.planner MarketingEdition**
 - It's free
 - Necessary for using configurable data offline
 - For other offline applications a license is required
- Click on **pCon.update >>**

The screenshot shows the pCon.login web application. On the left, a dark sidebar menu is open, with the 'Applications' option highlighted by a red arrow labeled '1'. The main content area is titled 'Applications' and has three tabs: 'Web', 'Phone & Tablet', and 'Computer & Notebook'. The 'Computer & Notebook' tab is active. Under this tab, there are two main sections. The first is 'pCon.update', which contains a paragraph of text and a link 'pCon.update >' highlighted by a red arrow labeled '3'. The second section is 'pCon applications', which contains a paragraph of text and a 'Select' button highlighted by a red arrow labeled '2'.



Intro



Registration



Download
DataClient



Install
DataClient



Wait for data
confirmation



Download data



Invite
colleagues

- Download **pCon.update DataClient**
 - Click on the **Download** link
 - It will maintain your data, and all pCon offline applications, always up to date


pCon.login

pCon.update

pCon.update provides pCon applications and manufacturer catalogs on your computer.

If you do not yet use pCon on your computer, please download and install the DataClient. It is free of charge. The DataClient will manage the installation of the required pCon applications.

[System Requirements >](#)



DataClient (required)


The DataClient installs and updates pCon applications and manufacturer catalogs on your computer.

	Standard	Pro
Download and installation of OFML, product data and pCon applications	✓	✓
Update notification	✓	✓
Automatic installation of updates		✓
Installing updates without administrator rights		✓
Installing updates from local network storage		✓
Supports Windows Server		✓

The standard edition is free of charge. Get in touch with your [contact person >](#) to purchase the Pro edition.

[User Manual \(PDF\) >](#)

[DataClient](#) (1.10.0) (1.10.0)





Intro



Registration



Download DataClient



Install DataClient



Wait for data confirmation



Download data



Invite colleagues

- In the **Manufacturer catalogs** menu you can check the **status** of the data request
- To complete the registration to the pCon community, click on **Activation Page**
- In the new window, **check that the data is correct** and click on Request
- You will receive an email with the approval usually within 24 hours

pCon.login

Home

User

Account

Organization

Account

Users

User groups

Manufacturer catalogs

Applications

Channels

Licenses

Contact

Help

Legal notice
Terms of use

Manufacturer Catalogs

Your approved catalogs are available in all pCon applications >

Please send me an e-mail when new manufacturers are available.

Currently, only the catalogs for which you have been invited by the respective manufacturer are activated. Do you want access to all catalogs? Request activation for the pCon Community. It is free of charge. [Activation Page](#)

Order Status ▾ Availability: IT ▾ Status ▾ Sector ▾ More ▾

Search

STEELBOX
STEEL&STYLE

ANATURE SYSTEM
WERTYKALIB

acousticpearls

ACTIU

Data request status



Intro



Registration



Download
DataClient



Install
DataClient



Wait for data
confirmation

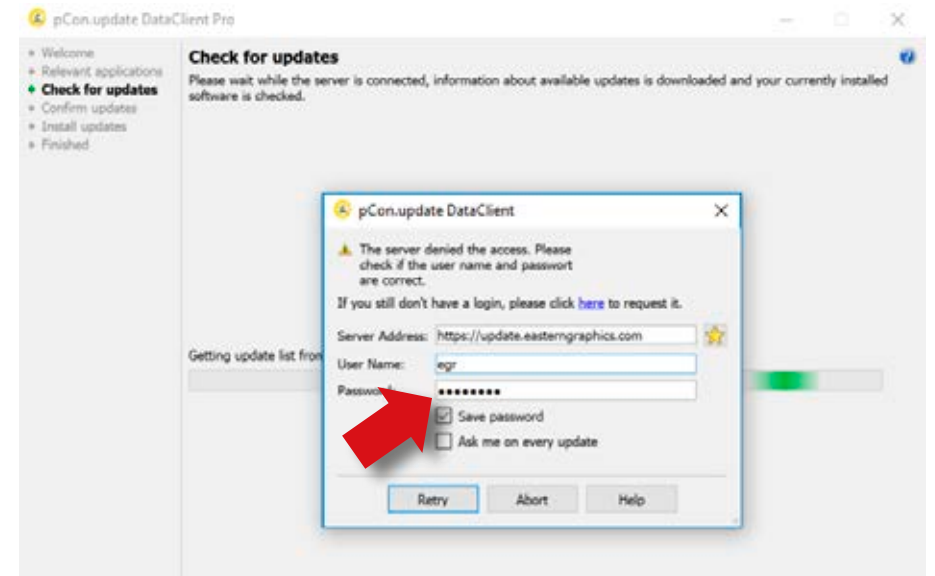


Download data



Invite
colleagues

- Install the DataClient, following the installation wizard
- After the installation is concluded, **run the DataClient** and follow the setting wizard
- When requested, insert your **pCon.login account credentials**
- Check on **Save password** and **click OK**





Intro



Registration



Download
DataClient



Install
DataClient



Wait for data
confirmation

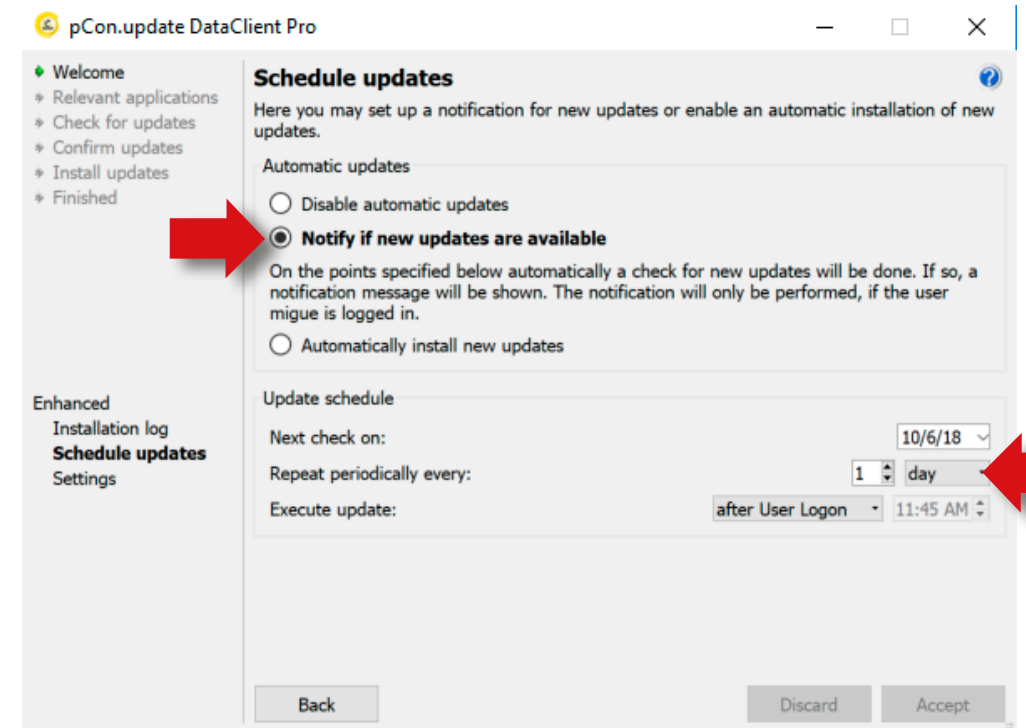


Download data



Invite
colleagues

- Click on **Schedule updates** on the left menu
- Select the following options
 - **Notify if new updates are available**
 - **Repeat periodically every:** to 'day'
 - **Execute update** to 'after User Logon'
- You'll receive an automatic notification when new updates are available





Intro



Registration



Download
DataClient



Install
DataClient



Wait for data
confirmation

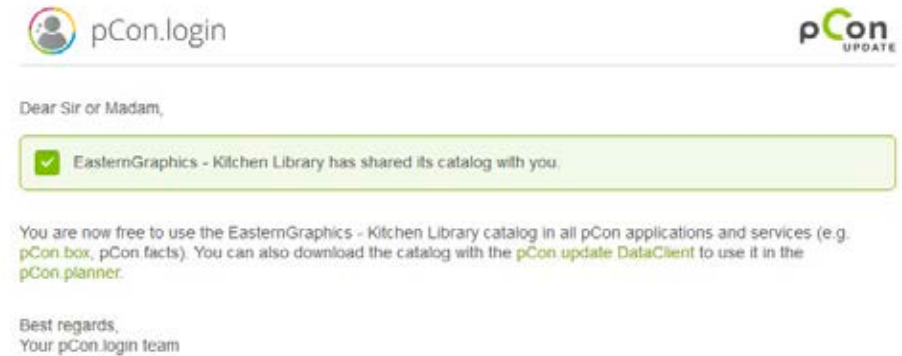


Download data



Invite
colleagues

- Now you'll have to wait for the manufacturer to approve the data access
- Usually it happens within 24 hours
- When you receive the confirmation email continue with this guide



- For the **online applications** (pCon.box and pCon.facts) you can start using the data immediately
- For the **offline applications** (pCon.planner) you'll have to download the data into your computer using pCon.update DataClient



pCon.facts



pCon.box





Intro



Registration



Download
DataClient



Install
DataClient



Wait for data
confirmation



Download data

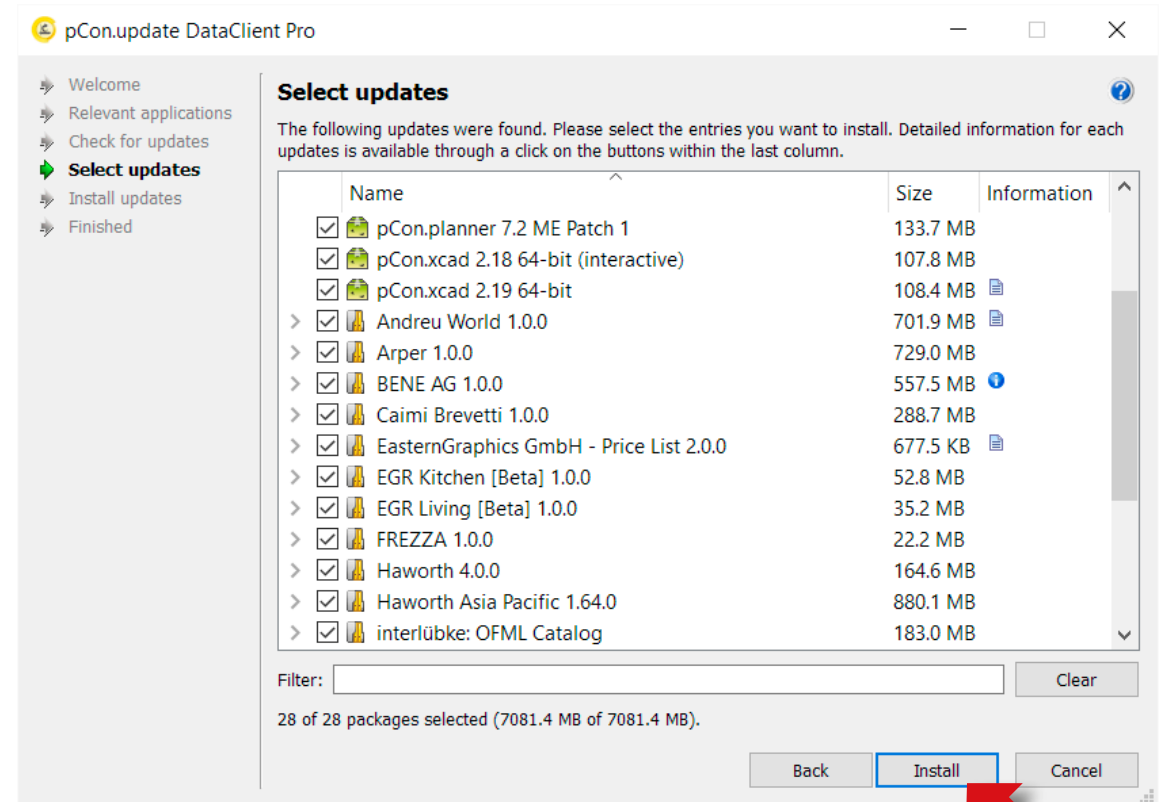


Invite
colleagues

- Start pCon.update DataClient
 - Click **Next** on the following two windows to force a control of what data is available to update
 - You'll see a list with the applications and data
- Click **Install** to start the download and installation process



It's necessary to have **pCon.planner ME or PRO** installed to use **configurable data**. The STD version available on the pCon.planner web site does not recognize configurable data.





Intro



Registration



Download
DataClient



Install
DataClient



Wait for data
confirmation



Download data



Invite
colleagues

- You are now ready to **invite other members of your organization** to join your organization's pCon.login account
- pCon.login allows you to manage your company users, request configurable data, manage software licenses and much more



pCon.login